

Morecambe Offshore Wind Farm

Notice to Mariners

NtM Number	Morecambe_Summer_VTS_NtM01
-------------------	-----------------------------------

Date of Issue	11.05.2022
----------------------	-------------------

1 Planned Activity

A marine vessel traffic survey is due to be undertaken for the proposed Morecambe Offshore Wind Farm project. The survey will be undertaken from one survey vessel, MORNING STAR, and will involve the collection of data of detected vessels and marine users through use of onboard radar, AIS and visual survey methods.

The extent of the area in which the survey vessel may be located during the survey is shown in Figure 1 with accompanying coordinates. Data will be collected within this area which is where the proposed array will be located. The survey vessel will roam and/or remain nominally static within the area for approximately 14 days depending on weather conditions. Dates may be subject to change. The survey vessel will operate on a 24hr basis and display appropriate navigational lights at all times during operations.

2 Geographic co-ordinates and chart of survey area

All positions quoted in WGS84: latitude /longitude (in decimal degrees & degrees minutes seconds)

See attached figures and lists of coordinates.

3 Safe clearances, navigation safety features and safety notes for mariners

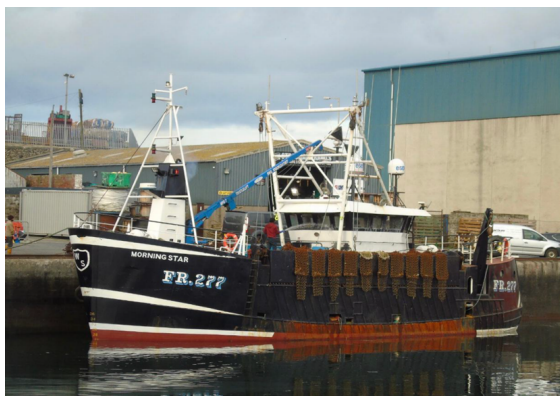
All vessels are requested to maintain a safe distance from the survey vessel at all times.

4 Outline programme of works

Survey Area: Morecambe Offshore Wind Farm	Estimated Start Date: 29.07.2022	Estimated Completion Date: 11.08.2022 (14 days after start date and may be extended depending on weather conditions).
--	---	--

5 Vessel details

Vessel Name:	MORNING STAR	Vessel Type / LOA(m):	Guard Vessel / 23 m
Vessel Function:	Survey vessel	MMSI: 232003852	VHF Call Sign: MYXY7
Vessel Telephone:	+44 (0) 7786 512 045 (Designated Person Ashore) / +44 (0) 7714 007 626 (Master Contact)		



6 Project Contact Details

Company Fisheries Liaison Officer:	Name:	Sophie Farenden
	Email:	sophie.farenden@brownmay.com
	Telephone:	07525128344

Figure 1: Proposed Location of Marine Traffic Survey Vessel Roaming Area

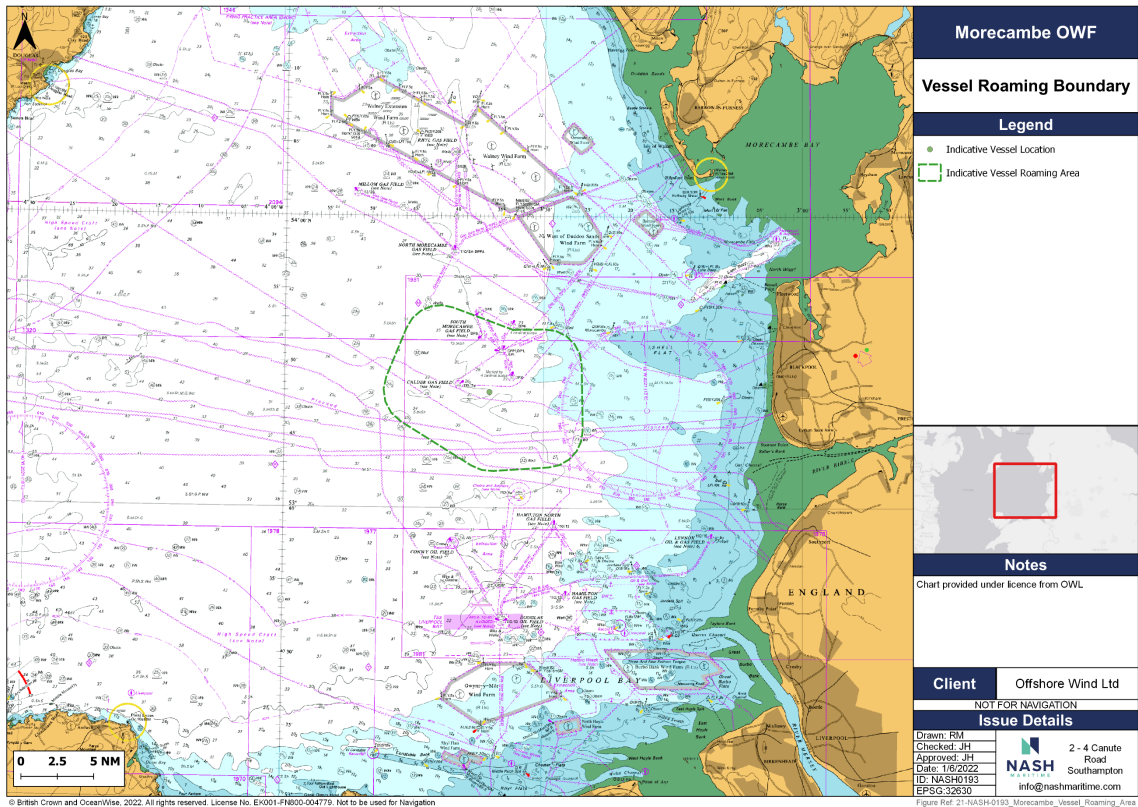


Table 1: Proposed Marine Traffic Survey Vessel Roaming Area Coordinates for Morecambe OWF.

Point	Long_DD	Lat_DD	Long_DMS	Lat_DMS
1	-3.559	53.87	-3°33'33.6	53°52'12.1
2	-3.498	53.871	-3°29'53.3	53°52'14.9
3	-3.476	53.869	-3°28'34.7	53°52'8.56
4	-3.456	53.863	-3°27'23.3	53°51'48.1
5	-3.441	53.854	-3°26'26.1	53°51'15.6
6	-3.43	53.843	-3°25'48.7	53°50'34.3
7	-3.426	53.83	-3°25'34.8	53°49'48.2
8	-3.424	53.756	-3°25'25.7	53°45'19.8
9	-3.427	53.743	-3°25'35.8	53°44'34.8
10	-3.436	53.732	-3°26'8.24	53°43'53.6
11	-3.45	53.722	-3°26'59.9	53°43'20.1
12	-3.468	53.716	-3°28'6.25	53°42'57.3
13	-3.489	53.713	-3°29'21.0	53°42'47.3
14	-3.596	53.709	-3°35'46.9	53°42'31.3
15	-3.618	53.71	-3°37'4.89	53°42'35.2
16	-3.638	53.715	-3°38'17.0	53°42'53.1
17	-3.775	53.765	-3°46'30.5	53°45'52.4
18	-3.794	53.774	-3°47'36.8	53°46'27.1
19	-3.805	53.787	-3°48'18.8	53°47'13.3
20	-3.809	53.801	-3°48'31.4	53°48'5.20
21	-3.804	53.816	-3°48'13.1	53°48'56.4
22	-3.802	53.818	-3°48'7.98	53°49'4.02
23	-3.765	53.872	-3°45'55.5	53°52'17.9
24	-3.754	53.883	-3°45'15.8	53°52'57.2
25	-3.738	53.891	-3°44'17.9	53°53'27.6
26	-3.719	53.896	-3°43'7.13	53°53'46.2
27	-3.697	53.898	-3°41'50.1	53°53'51.4
28	-3.676	53.895	-3°40'34.1	53°53'42.5